

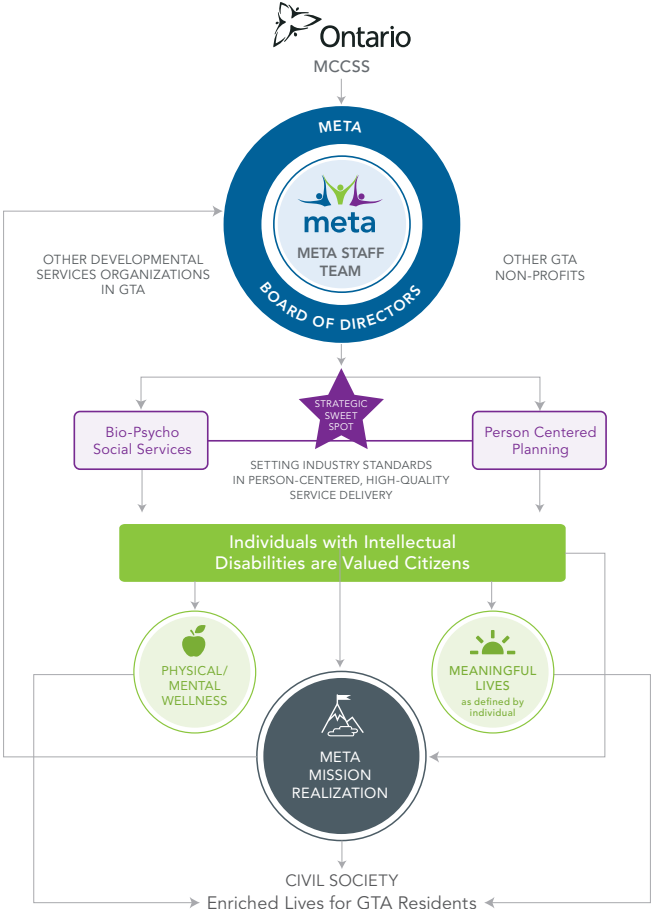


# passion for excellence

Three-Year SuccessMap™ 2019-2021

# bringing value to the community

Meta improves the well-being of over 500 individuals with developmental disabilities through the most crucial stages of life, from youth-oriented services to the critical needs associated with our aging individuals. Staff members, volunteers, families and clients all make valued contributions to the Meta organization, collectively working to achieve shared goals and outcomes. Meta has continued to grow its service offerings to meet the needs of the community. Today, there are a wide variety of residential and day services supporting each person as they develop their skills and pursue their interests. As a large employer, Meta has more than 450 staff and also engages many volunteers, who make a vital contribution of their time and energy. Meta also has formal partnerships and relationships with 30 community partners.



# five overarching goals



## Recognized Leader

Be recognized as an accredited provincial leader, setting the standard for person-centered care and high-quality program/service delivery.



## Increased Reach

Support more people with developmental disabilities by expanding high-quality programs and services.



## Motivated, Skilled & Fully-Aligned Team

Empower a motivated, skilled and fully-aligned team that is passionate and caring and adheres to the highest professional ethics and standards.



## Brand Awareness, Outreach & Marketing

Extend awareness of Meta as an excellent organization with a strong reputation through strategic partnerships and outreach.



## Revenue Development

Generate revenues to support the needs of the individuals and families we serve today and in the future.



# vision

A community where all persons thrive as valued, respected citizens leading dignified, fulfilling lives.

# mission

Meta offers a wide spectrum of services and personalized supports to help people live inclusive, engaged and enriched lives in the community.

# values

- ▶ Person-Centered Support or Choice
- ▶ Excellence, Quality & Innovation
- ▶ Compassion
- ▶ Integrity & Accountability
- ▶ Inclusiveness
- ▶ Partnership & Collaboration
- ▶ Respect & Dignity
- ▶ Safety

## THANK YOU to all who contributed to the Meta Strategic Plan!

Meta engaged in a comprehensive research, development and strategic planning process. Our special thanks to all our collaborative partners, Board of Directors, staff, community organizations and stakeholders who participated in building our new Strategic Plan!



[metacentre.ca](http://metacentre.ca)

